

Olo Homes
by Rize

Olo is a Finnish word for
the feeling of being.
Derived from the verb olla,
meaning *to be*.

It also means a space
to exist peacefully.

Welcome to
Olo Homes.





A place
to simply be.



- 1 Olo Story
- 14 Neighbourhood
- 20 Amenities
- 28 Rooftop
- 36 Homes
- 42 Team
- 46 Rize Story



Olo Homes redefines city living, where a sense of community and connection to nature live in harmony.



It's hard to describe the perfect home, but you know exactly how it feels.



Olo seeks to explore those special moments of home; the smell of your favourite morning brew, the thrills and laughter of Saturday game night, or neighbourhood park strolls with loved ones, coffee in hand.

From inside out, it offers a bold architectural vision, one that leverages the beauty, tranquility and dynamism of the neighbourhood with the feeling of simply *being*—of existing peacefully.

Featuring elevated, expansive amenity spaces, an apex location that is both tucked away yet close to it all, and warm, contemporary design that feels made for you, Olo offers a seamless blend of serenity in nature and modern urban living.



Lougheed Town Centre

Burquitlam SkyTrain Station

Burnaby Lake

Olo Homes

Metrotown

Burnaby Mountain

That feeling when
a neighbourhood
becomes a home—
your home.

Burquitlam is paving the way for the future of urban living in Vancouver. It's a neighbourhood that lets you experience the magic of your favourite day-to-day rituals; of weekend trips to the Farmer's Market, evening park walks with your dog, gathering for a meal with loved ones, or spirited karaoke evenings with friends. It's a place to live your best life.

For being exactly
where you need to be.



Coquitlam Farmers Markets



Olo stands proudly at the highest point in Burquitlam, making your views vast and your commute convenient.



For feeling in
the mix and away
from the fray.

- Transportation
- A

Burquitlam Station
- B

Lougheed Station
- Recreation & Education
- A

Lord Baden-Powell Elementary
- B

Roy Stibbs Elementary
- C

SFU Trailheads
- D

Oakdale Park
- E

Stoney Creek
- F

Vancouver Golf Club
- G

Cottonwood Park
- H

Cameron Rec Centre & Park
- I

F45 Training
- J

Bettie Allard YMCA
- Shopping
- A

Lougheed Town Centre
- B

Safeway Burquitlam Plaza
- C

H-Mart
- D

Hannam Supermarket
- E

PriceSmart Foods
- F

Save-On-Foods
- G

Marshall Flower Garden
- Restaurants
- A

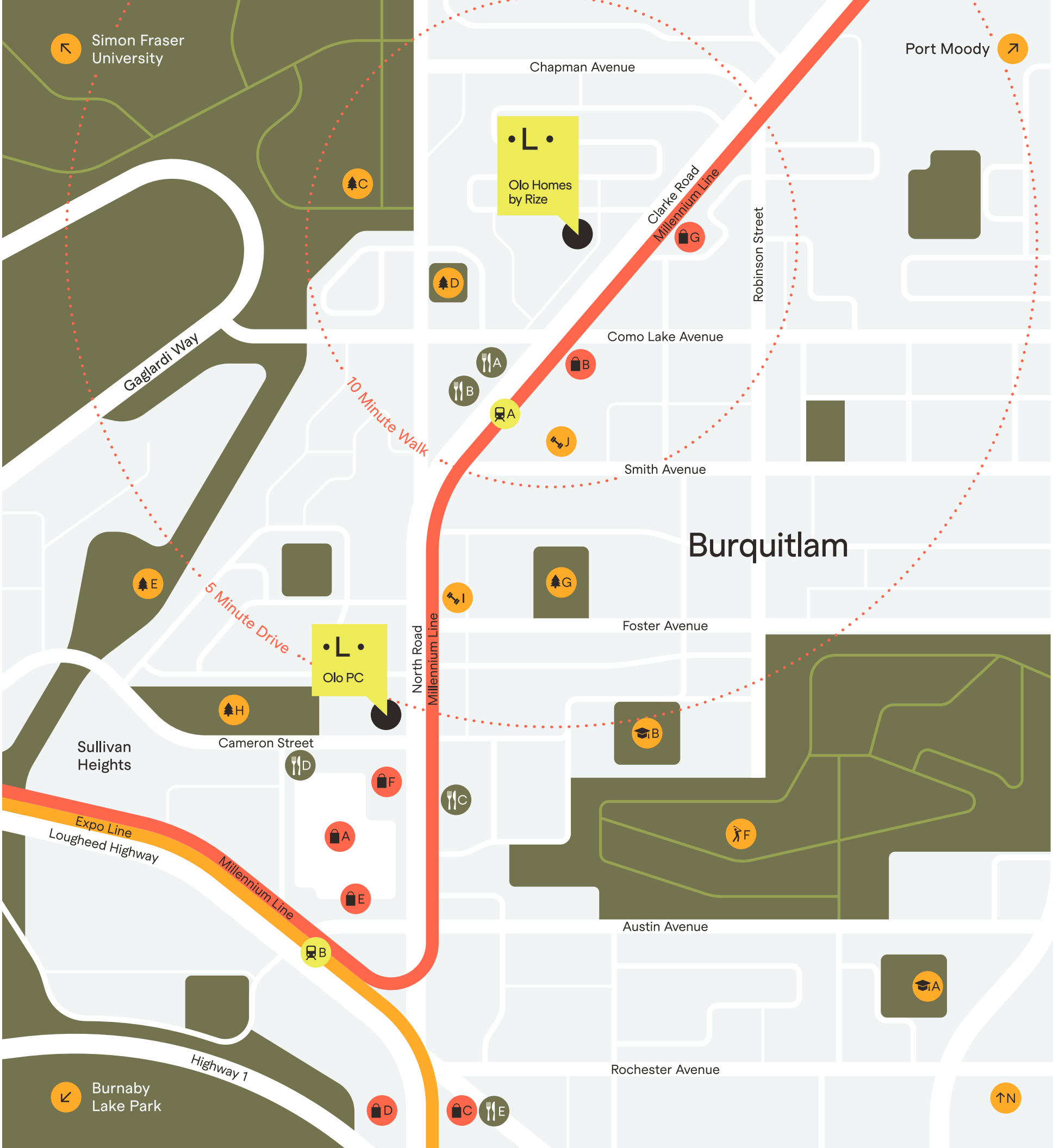
BjornBar Bakery & Cafe
- B

Saku Burquitlam
- C

Kokoro Tokyo Mazesoba
- D

Green Leaf Sushi
- E

JOEY Coquitlam



Amenities
designed for living
your best life.

Rise, thrive,
■ rejuvenate, repeat.

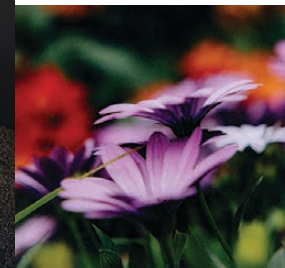
Rooftop kitchen amenity



Olo features over 20,000 square feet of indoor-outdoor amenity spaces, including fitness, wellness, media, and childcare.



For meeting your neighbours.

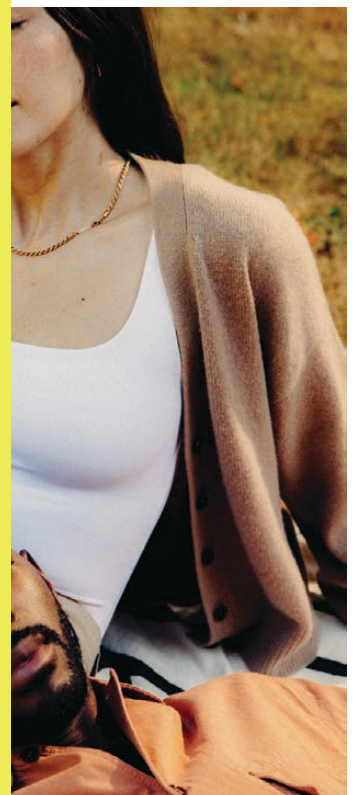
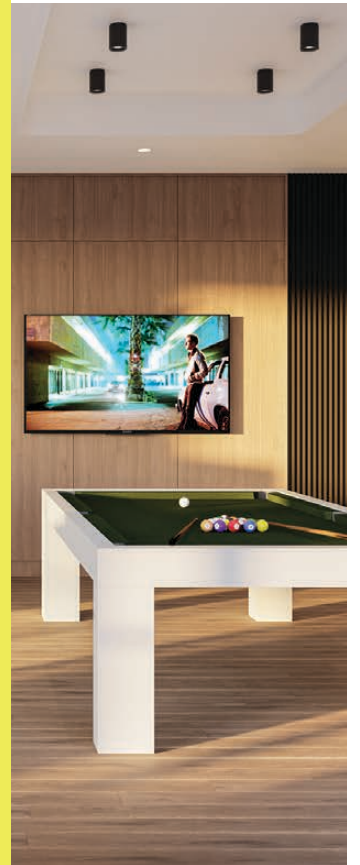


For hitting the high notes in karaoke.





For home cooking.
For ordering in.
For lending libraries.
For lending a hand.
For rooftop sunrises.
For hitting snooze again.
For eye-catching design.
For catching your breath.
For being present.



For being at home.



Rooftop Games Room



Brand Partnerships

At Rize, we believe in brand partnerships that enhance daily life and celebrate those special moments of simply being; of mindful yoga sessions and evening workouts, the feeling of fresh crisp sheets, of giving your home personal design touches.

Home is a feeling, and it feels lovely.



As an Olo resident, enjoy exclusive offers and deals from some of Metro Vancouver’s most beloved brands.

Vancouver Private Dining

Experience a combination of traditional and modernist culinary techniques that play off of global flavours and food trends, courtesy of a talented team of personal chefs.

F45 Training Lougheed

F45 Training is all about functional group fitness, with the effectiveness and attention of a certified personal trainer.

Glory Juice

This popular organic juice company offers certified organic cold-pressed juice, juice cleanses, nut mylks, smoothies, acai bowls, and superfood snacks.

Irene Yoga Flow

An experienced yoga instructor based out of Vancouver, Irene specializes in creative vinyasa and mindful yin yoga classes.

Hudson & Oak

Enjoy modern housewares for the everyday home, from stackable tableware to hand-painted planter pots.

Homecoming

Inspired by the integrity of everyday spaces, Homecoming Candles creates elevated home goods intended to fit perfectly into any space.

Article

Article offers a stylish catalogue of contemporary, mid century and modern furniture from world renowned designers at accessible prices.

Takasa

Enjoy mindful and sustainable comfort with Takasa’s organic and ethically sourced homeware linens, from bedsheets to fluffy cotton towels.

La Bomba

This flower studio, curated retail space and floral subscription service offers unique and thoughtful florals that instantly brighten your home.

Resound School of Music

Enjoy private music lessons in person or from the comfort of your home, courtesy of expert teachers and instructors. Choose from piano, guitar, and bass to drums, violin, and voice lessons.

The best view is
the one from Olo.



Olo's rooftop terrace is a skyward escape offering sweeping, unobstructed views of the North Shore mountains. It's a space to rest, gather, and sing, featuring a karaoke console and lounge designed for rooftop sunrises, meeting your neighbours, and hitting the high notes.





Fitness Centre

Inspired by tranquil Nordic spas, Olo features multiple fitness and wellness spaces designed as an expansion of your own home, including amenity areas for pilates, weight training, and yoga, personal workout pods, and private wellness perfect for booking virtual classes and meditation sessions.

This is your space, your home for resting, thriving, and living well.



Nordic Spa

A place to catch your breath.
 A space to reflect.



Where form and
function intertwine.

Choose from two contemporary interior schemes—Oak or Walnut—each with unique and thoughtful design touches.



Oak Scheme Kitchen



The Oak scheme is modern and eclectic, featuring serene natural white oak finishings, black accents, and layered patterns and textures designed to be comfortable and inviting.



Choose from two contemporary i
Walnut—each with unique and th

The Walnut scheme is
equally stylish, sleek, and
contemporary—the perfect
canvas for bold and playful
design touches that feel
uniquely yours.

Oak Scheme Kitchen



Walnut Scheme Kitchen



Olo's design seamlessly blends the calm, natural beauty of the surrounding parks with the vibrancy of modern urban spaces.





Creating places
that matter.



The Olo Team

Architecture: GBL Architects

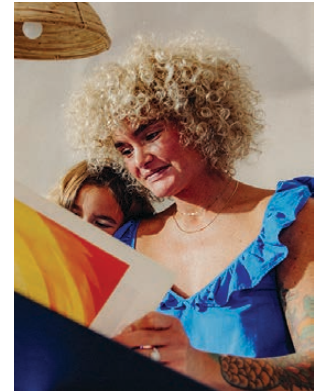
GBL Architects Inc. is a cohesive and progressive Vancouver based firm of 70 architects, project managers, and technicians providing a full range of architectural services to the private and public sector. The firm has built its reputation on high quality design, tight project management, technical proficiency, financial responsibility and keen administrative skills.

Interior Design: Insight Design Group

Insight Design Group is an award-winning Vancouver-based interior design firm with a focus on residential, commercial, and hospitality projects. Since 1995, IDG has been involved with some of the most successful developments and projects throughout Vancouver and Canada.

Sales & Marketing: Magnum Projects

Since 1991, George Wong and the Magnum Projects team have established an impeccable track record. Across the Lower Mainland, Magnum Projects has consistently delivered impressive results for developers and purchasers. Magnum Projects is home to some of the most exceptional real estate professionals in the industry. From initial land acquisition and project development to after sales service, Magnum Projects has experienced industry specialists to help ensure the success of any project.





Creating places that matter since 1992.

Rize is a full-service real estate development, construction management, and property management company. With a portfolio resulting in 2,600 homes and 620,000 square feet of commercial space, our team balances design innovation and constructability while striving for community excellence.



↑ Gold House 1 + 2, Metrotown



Creating places that matter across the Lower Mainland and Los Angeles.

Inspired Design

Every development must reflect the physical and social context while making an emotional connection with its community.

Innovation must be actionable. Our focus on delivering better solutions must be realistic, ensuring the liveability and constructability of our projects.

Functional Responsibility

Community Relevance

We invest time to ensure our product is serving an identified need and our process is understood and valued by our greater community.

Uniqueness is not a goal, but a result.



In 2006, Rize completes its first all commercial building—The Cossette—the corner landmark of commercial spaces in Yaletown.

Metropolis

Rize's second residential project and one of the first projects to implement the Vancouver Heritage Revitalization Agreement (along with the Robson Street Vancouver Library, now the Victoria Secret / CTV building), beautifully restoring the Canadian Linen Building.

Rize begins developing and building its portfolio of projects, bringing construction in-house and executing its vision of creating places that matter.

Linea

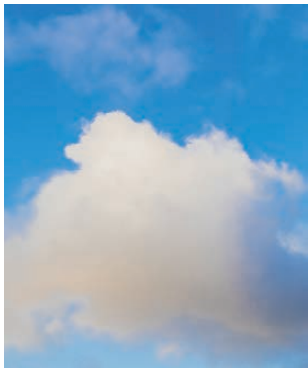
Located in the heart of Surrey's future-facing city centre, function and sophistication come together to create Linea — a space where architectural excellence acts as a form of public art.



↑ Gold House 1 & 2

Gold House 1 & 2

Gold House ushers in something truly unique in the Metrotown neighbourhood — a lifestyle via architectural form. It creates a bold statement in the Burnaby skyline, injecting intelligent luxury into this bustling, amenity-rich location through lavish architecture and interiors, a striking lobby, and a beautiful green space.



Olo Homes

Rize debuts Olo, where every moment is an opportunity to embrace the essence of simply being — of living your best life.

Rize also completes construction of Comma Barrington, a co-living project in Los Angeles, and The Hyland, a 108-home purpose-built rental project in East Vancouver.



1992

1996

2002

2010

2013

2015

2019

2020

2021

2022

2024

Future

The Hamilton

Rize was the very first to envision and develop residential housing in Yaletown's heritage spaces. What followed was a massive revitalization of this warehouse district turned destination neighbourhood.

"In the '90s, Yaletown was a bustling centre for industrial trades and manufacturing and I knew it could become more. I knew it could be a place that people could call home."
- Rize founder and CEO, Will Lin



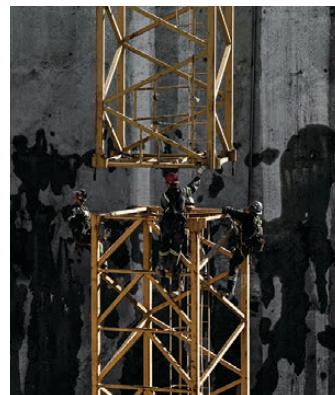
↑ The Hamilton

The London

Originally designed by Sommerville & Putnam, this Edwardian Commercial building helped shape much of downtown Vancouver. It was first finished in 1912 for the London and British North America Company. One of the earliest Heritage Revitalization Agreements with the City of Vancouver, Rize pioneers and paves the path for its revitalization.



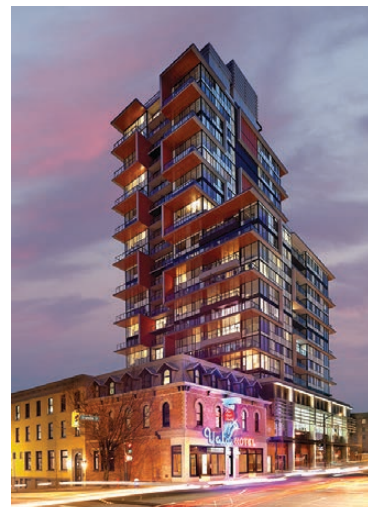
The London →



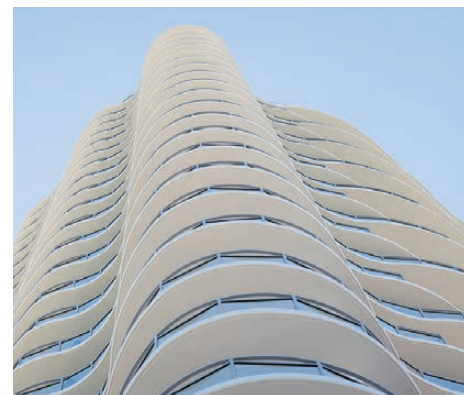
↑ Rize Alliance in-house construction

The Rolston

The Rolston is a gateway to Granville Street, nestled between the downtown off-ramps from the Granville Street bridge and the beloved 1889 Yale Hotel and Pub Heritage Building. Fully updated in 2013, it honours the legacy of this eclectic urban area and gives back to the community with the heritage preservation of the Yale Hotel.



↑ The Rolston



↑ Linea

The Independent

In the heart of one of the most loved neighbourhoods in Vancouver, The Independent is a varied and vibrant architectural expression inspired by Mount Pleasant itself.

Through its materiality and colour, this mixed-use residential, office, and commercial development reinterprets and celebrates the neighbourhood's diverse architectural history and eclectic personality.



← The Independent

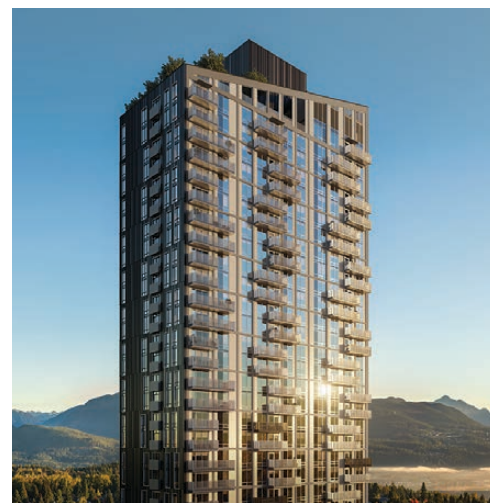
Comma

Rize launches Comma Properties, a new division focused on building better rental communities across the Lower Mainland and Los Angeles. Comma brings an integrated approach to rental property management, residential community programming, and retail leasing.



↑ Comma Fraser

Rize Construction launches Hovercraft, the newly branded arm of Rize, carrying out our ethos to build places that matter for our cities and neighbourhoods. Hovercraft has helped build three million square feet of completed, active, or planned construction for Rize which includes 3,200 homes and more than 370,000 square feet of commercial retail space.



↑ Olo Homes

With 2,600 homes in our pipeline, Rize is committed to continuing to create places that matter, for you, our future, our neighbourhoods, and our cities. From projects in Surrey, Burnaby, and Vancouver to Los Angeles, we're here to be bold and non-conforming, and to create, build, and construct in the cities we all live in.





Olo Homes
by Rize

Sales Gallery:
170 - 3355 North Road, Burnaby

Contact Us:
info@olohomes.ca
(604) 565 7299
olohomes.ca

Rize M A G N U M

Developer reserves the right to modify or change plans, unit numbers, specifications, and/or features without notice. Floorplans, elevations, room sizes, decks, and square footage are approximate and may vary from the actual built home. Floorplans may be oriented differently than displayed. Refer to the Disclosure Statement for specific details. This is not an offering for sale. Any such offering can only be made with the applicable Disclosure Statement and agreement of purchase and sale. E&O.E. Sales and marketing by Magnum Projects.