



Olo Homes  
by Rize

Olo is a Finnish word for the feeling of being.  
Derived from the verb olla—meaning *to be*.

It also means a space to exist peacefully.

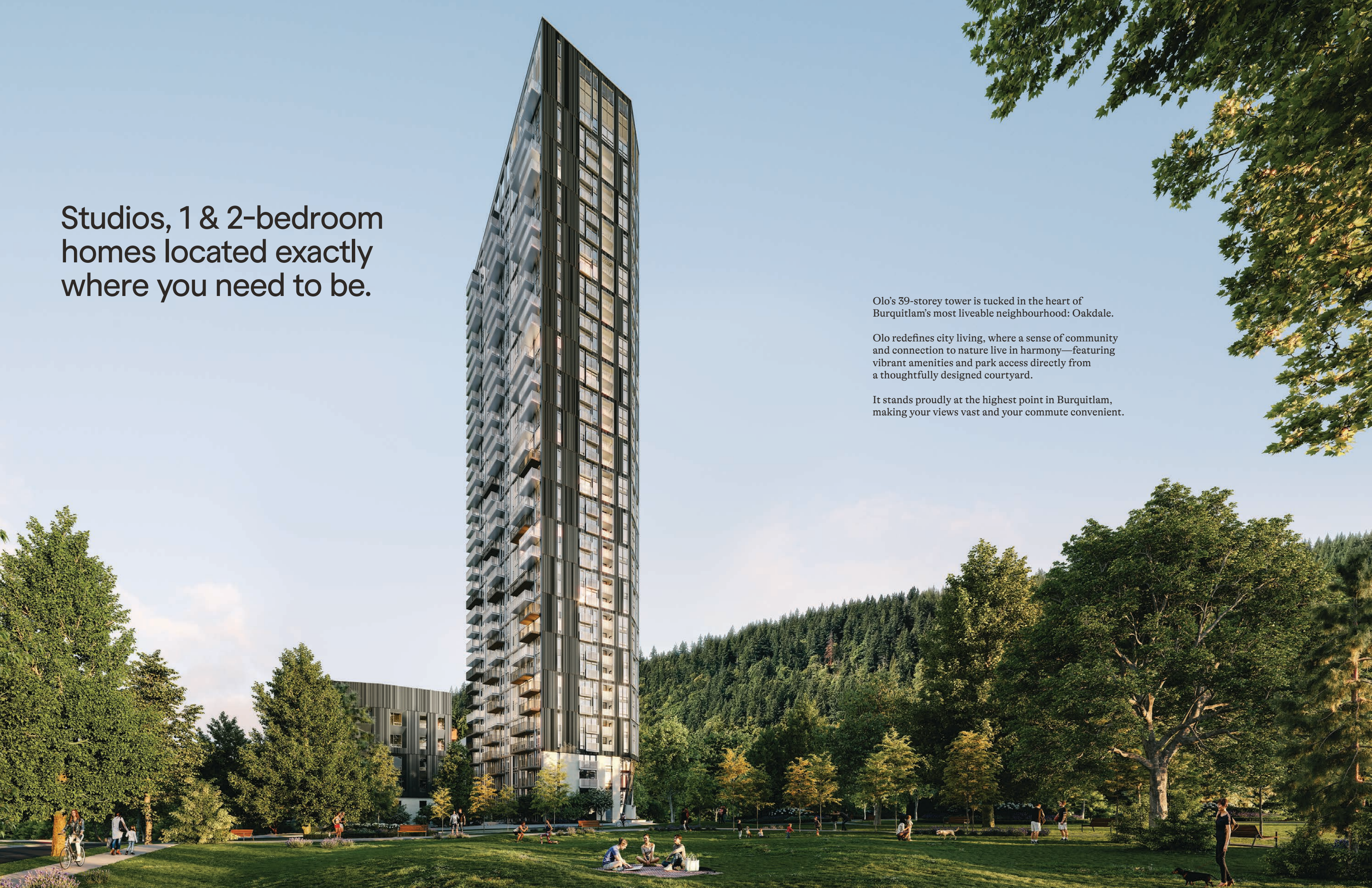


At Olo, every moment is an opportunity  
to embrace the essence of simply *being*—  
of living your best life.

Nestled within a neighbourhood that exudes  
warmth and vitality, Olo offers more than just  
a home; it's a sanctuary where comfort meets  
convenience, and where every detail is crafted  
with your quality of life in mind.





An architectural rendering of a modern, 39-story apartment tower. The building features a dark, vertical-slatted facade and numerous balconies. It is situated in a lush, green environment with a large, open courtyard in the foreground where people are seen walking, sitting, and playing. The background shows a dense forest of tall evergreen trees under a clear blue sky. The overall scene conveys a sense of urban living integrated with nature.

Studios, 1 & 2-bedroom  
homes located exactly  
where you need to be.

Olo's 39-storey tower is tucked in the heart of Burquitlam's most liveable neighbourhood: Oakdale.

Olo redefines city living, where a sense of community and connection to nature live in harmony—featuring vibrant amenities and park access directly from a thoughtfully designed courtyard.

It stands proudly at the highest point in Burquitlam, making your views vast and your commute convenient.



Studios, 1 & 2-bedroom homes  
built for living your best life.

## ■ Welcome to Olo.

Live your best life in a neighbourhood you can proudly call home, not just for today, but for all the tomorrows yet to unfold. Enjoy over 20,000 square feet of vibrant amenities, elegant design, and a flourishing central location.





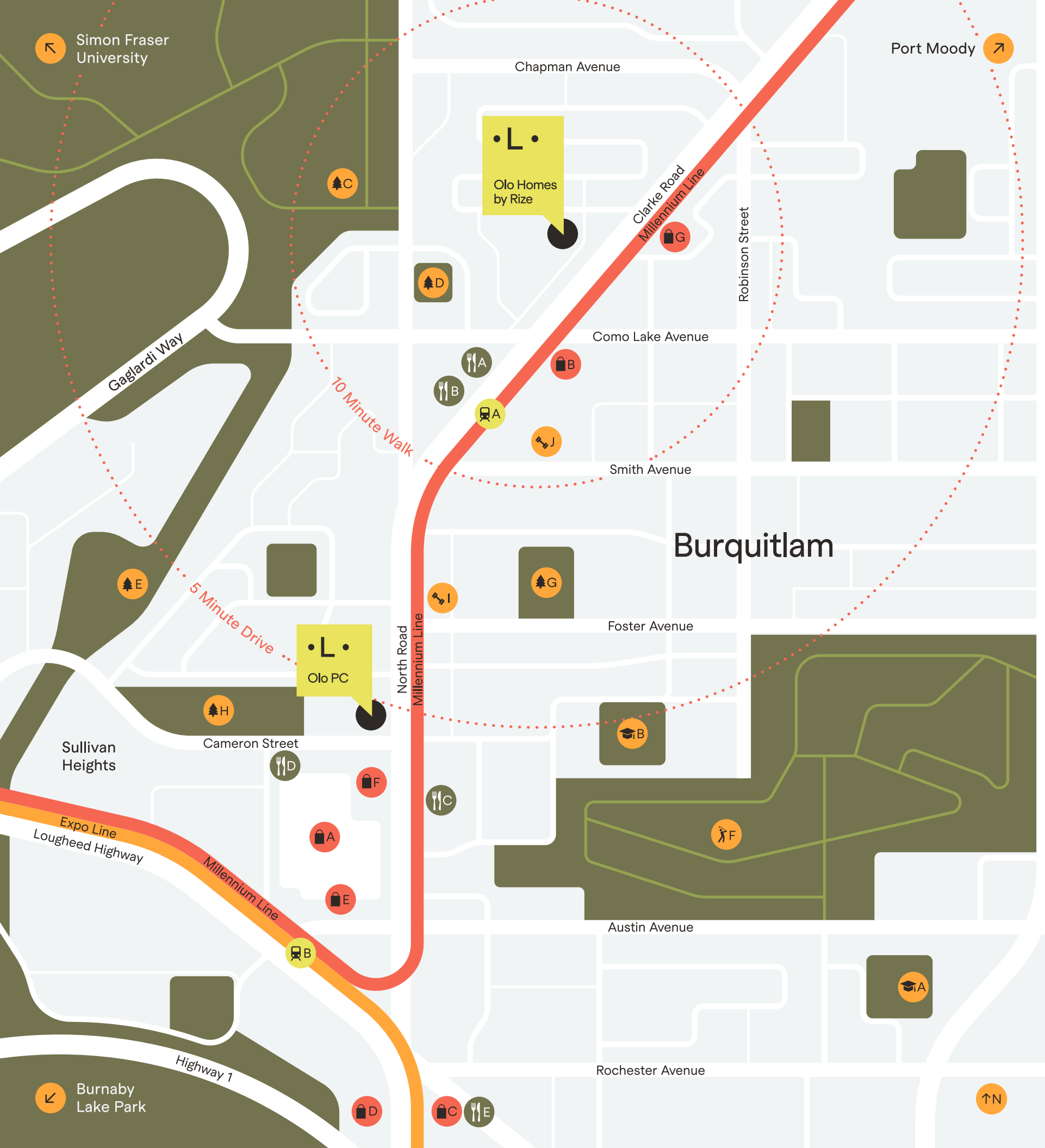
It's hard to describe the perfect home,  
but you know exactly how it feels.

Located beside a future park, Olo features unobstructed  
views of the North Shore mountains and the emerging  
town centre to the south, making it the perfect oasis to live  
and thrive in the city's heart.

# It's the mix that ■ brings the magic.







For feeling  
in the mix and  
*away from the fray.*

- Transportation
  - A Burquitlam Station
  - B Lougheed Station
- Recreation & Education
  - A Lord Baden-Powell Elementary
  - B Roy Stibbs Elementary
  - C SFU Trailheads
  - D Oakdale Park
  - E Stoney Creek
  - F Vancouver Golf Club
  - G Cottonwood Park
  - H Cameron Rec Centre & Park
  - I F45 Training
  - J Bettie Allard YMCA
- Shopping
  - A Lougheed Town Centre
  - B Safeway Burquitlam Plaza
  - C H-Mart
  - D Hannam Supermarket
  - E PriceSmart Foods
  - F Save-On-Foods
  - G Marshall Flower Garden
- Restaurants
  - A BjornBar Bakery & Cafe
  - B Saku Burquitlam
  - C Kokoro Tokyo Mazesoba
  - D Green Leaf Sushi
  - E JOEY Coquitlam



Olo is nestled in the heart of a tranquil neighbourhood enveloped by lush parks and green spaces, including the Burnaby Mountain and SFU trails, Vancouver Golf Club, Stoney Creek, Oakdale Park, and more, all a short drive or walk away.

That feeling when a  
neighbourhood becomes  
a home—your home.



↑ Farmers Markets



↑ Burquitlam Station

Burquitlam is an enticingly dynamic community with new businesses, cultural hubs, and scenic escapes offering a lifestyle that is both serene and invigorating.



↑ Multiple parks and green spaces a short walk or drive away.





# A place to catch your ■ breath. A space to reflect.

Inspired by tranquil Nordic spas, Olo features multiple fitness and wellness spaces designed as an extension of your own home, including amenity areas for pilates, weight training and yoga, personal workout pods, and private wellness perfect for booking virtual classes and meditation sessions.



This is your space —  
your home for resting,  
thriving, and living well.



Dry saunas, weight room, pilates area, and yoga space.



20,000 sf of amenities  
to live your best life.

For morning yoga sessions.  
For meeting your neighbours.  
For coffee on the roof.  
For workout playlists.  
For karaoke nights.  
For dinner with a view.  
For making memories.  
For catching your breath.  
For being present.  
  
For being at home.



↑ Children's playroom

Located on L4, Olo features a spacious childcare facility, the perfect place for your little ones to connect, imagine, and create memories, steps from your front door.

While the future daycare will be located on L1, thoughtful and inviting spaces for your child to thrive are only an elevator ride away.



Rise, thrive,  
rejuvenate, repeat.



L3: Private wellness space for personal training, meditation, and booking virtual classes, with two single workout pods.



For rooftop sunrises.  
For hitting the high notes in karaoke.  
For meeting your neighbours.  
For being exactly where you need to be.



Karaoke Room

With its desirable geodetic location, Olo's rooftop terrace is a skyward escape offering sweeping scenic views. It's a space to rest, gather, and sing, featuring a karaoke console and lounge designed for rooftop sunrises and hitting the high notes.





# Brand Partnerships

At Rize, we believe in brand partnerships that enhance daily life and celebrate those special moments of simply being; of mindful yoga sessions and evening workouts, the feeling of fresh crisp sheets, of giving your home personal design touches.

Home is a feeling, and it feels lovely.



As an Olo resident, enjoy exclusive offers and deals from some of Metro Vancouver’s most beloved brands.

## Vancouver Private Dining

Experience a combination of traditional and modernist culinary techniques that play off of global flavours and food trends, courtesy of a talented team of personal chefs.

## F45 Training Lougheed

F45 Training is all about functional group fitness, with the effectiveness and attention of a certified personal trainer.

## Glory Juice

This popular organic juice company offers certified organic cold-pressed juice, juice cleanses, nut mylks, smoothies, acai bowls, and superfood snacks.

## Irene Yoga Flow

An experienced yoga instructor based out of Vancouver, Irene specializes in creative vinyasa and mindful yin yoga classes.

## Hudson & Oak

Enjoy modern housewares for the everyday home, from stackable tableware to hand-painted planter pots.

## Homecoming

Inspired by the integrity of everyday spaces, Homecoming Candles creates elevated home goods intended to fit perfectly into any space.

## Article

Article offers a stylish catalogue of contemporary, mid century and modern furniture from world renowned designers at accessible prices.

## Takasa

Enjoy mindful and sustainable comfort with Takasa’s organic and ethically sourced homeware linens, from bedsheets to fluffy cotton towels.

## La Bomba

This flower studio, curated retail space and floral subscription service offers unique and thoughtful florals that instantly brighten your home.

## Resound School of Music

Enjoy private music lessons in person or from the comfort of your home, courtesy of expert teachers and instructors. Choose from piano, guitar, and bass to drums, violin, and voice lessons.



Olo's design seamlessly blends the calm, natural beauty of the surrounding parks with the vibrancy of modern urban spaces. Choose from two contemporary interior schemes—Oak or Walnut—each with unique and thoughtful design touches.

## Where form and function intertwine.



↑ Walnut Scheme

The Oak scheme is modern and eclectic, featuring serene natural white oak finishings, black accents, and layered patterns and textures designed to be comfortable and inviting.

The Walnut scheme is equally stylish, sleek, and contemporary — the perfect canvas for bold and playful design touches that feel uniquely yours.

← Oak Scheme



# Creating places that matter since 1992.

Ríze is a full-service real estate development, construction management, and property management company. With a portfolio resulting in 2,600 homes and 620,000 square feet of commercial space, our team balances design innovation and constructability while striving for community excellence.



↑ Gold House 1 + 2, Metrotown



Creating places that matter across the Lower Mainland and Los Angeles.

## Inspired Design

Every development must reflect the physical and social context while making an emotional connection with its community.

Innovation must be actionable. Our focus on delivering better solutions must be realistic, ensuring the liveability and constructability of our projects.

## Functional Responsibility

## Community Relevance

We invest time to ensure our product is serving an identified need and our process is understood and valued by our greater community.



# Uniqueness is not a goal, but a result.



In 2006, Rize completes its first all commercial building—The Cossette—the corner landmark of commercial spaces in Yaletown.

## Metropolis

Rize's second residential project and one of the first projects to implement the Vancouver Heritage Revitalization Agreement (along with the Robson Street Vancouver Library, now the Victoria Secret / CTV building), beautifully restoring the Canadian Linen Building.

Rize begins developing and building its portfolio of projects, bringing construction in-house and executing its vision of creating places that matter.

## Linea

Located in the heart of Surrey's future-facing city centre, function and sophistication come together to create Linea — a space where architectural excellence acts as a form of public art.



↑ Gold House 1 & 2

## Gold House 1 & 2

Gold House ushers in something truly unique in the Metrotown neighbourhood — a lifestyle via architectural form. It creates a bold statement in the Burnaby skyline, injecting intelligent luxury into this bustling, amenity-rich location through lavish architecture and interiors, a striking lobby, and a beautiful green space.



## Olo Homes

Rize debuts Olo, where every moment is an opportunity to embrace the essence of simply being — of living your best life.

Rize also completes construction of Comma Barrington, a co-living project in Los Angeles, and The Hyland, a 108-home purpose-built rental project in East Vancouver.



1992

1996

2002

2010

2013

2015

2019

2020

2021

2022

2024

Future

## The Hamilton

Rize was the very first to envision and develop residential housing in Yaletown's heritage spaces. What followed was a massive revitalization of this warehouse district turned destination neighbourhood.

"In the '90s, Yaletown was a bustling centre for industrial trades and manufacturing and I knew it could become more. I knew it could be a place that people could call home."  
- Rize founder and CEO, Will Lin



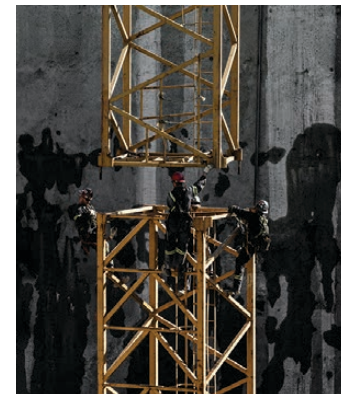
↑ The Hamilton

## The London

Originally designed by Sommerville & Putnam, this Edwardian Commercial building helped shape much of downtown Vancouver. It was first finished in 1912 for the London and British North America Company. One of the earliest Heritage Revitalization Agreements with the City of Vancouver, Rize pioneers and paves the path for its revitalization.



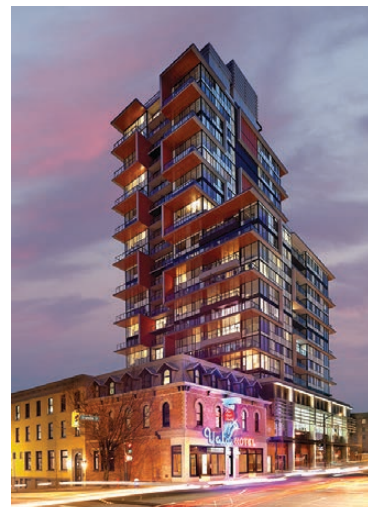
The London →



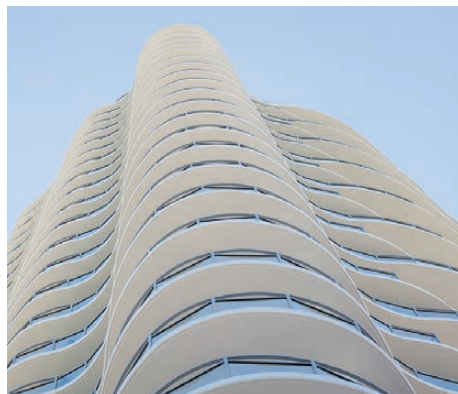
↑ Rize Alliance in-house construction

## The Rolston

The Rolston is a gateway to Granville Street, nestled between the downtown off-ramps from the Granville Street bridge and the beloved 1889 Yale Hotel and Pub Heritage Building. Fully updated in 2013, it honours the legacy of this eclectic urban area and gives back to the community with the heritage preservation of the Yale Hotel.



↑ The Rolston



↑ Linea

## The Independent

In the heart of one of the most loved neighbourhoods in Vancouver, The Independent is a varied and vibrant architectural expression inspired by Mount Pleasant itself.

Through its materiality and colour, this mixed-use residential, office, and commercial development reinterprets and celebrates the neighbourhood's diverse architectural history and eclectic personality.



← The Independent

## Comma

Rize launches Comma Properties, a new division focused on building better rental communities across the Lower Mainland and Los Angeles. Comma brings an integrated approach to rental property management, residential community programming, and retail leasing.



↑ Comma Fraser

Rize Construction launches Hovercraft, the newly branded arm of Rize, carrying out our ethos to build places that matter for our cities and neighbourhoods. Hovercraft has helped build three million square feet of completed, active, or planned construction for Rize which includes 3,200 homes and more than 370,000 square feet of commercial retail space.



↑ Olo Homes

With 2,600 homes in our pipeline, Rize is committed to continuing to create places that matter, for you, our future, our neighbourhoods, and our cities. From projects in Surrey, Burnaby, and Vancouver to Los Angeles, we're here to be bold and non-conforming, and to create, build, and construct in the cities we all live in.



# Floorplate Levels 5-38

Studio, 1 & 2-bedroom homes located at the centre of everything you need. Experience parkside living at the highest point in Burquitlam.

**B5** 1 Bedroom  
1 Bathroom  
Interior 503 sf  
Exterior 79 sf  
Total 582 sf

**C8** 2 Bedroom  
2 Bathroom  
Interior 865 sf  
Exterior 71 sf  
Total 936 sf

**A3** Jr 1 Bedroom  
1 Bathroom  
Interior 412 sf  
Exterior 13 sf  
Total 425 sf

**C6** 2 Bedroom  
2 Bathroom  
Interior 826 sf  
Exterior 61-105 sf  
Total 887-931 sf

**B6** 1 Bedroom  
1 Bathroom  
Interior 510 sf  
Exterior 85 sf  
Total 595 sf



**B9** 1 Bedroom  
1 Bathroom  
Interior 552 sf  
Exterior 79 sf  
Total 631 sf

**B4** 1 Bedroom  
1 Bathroom  
Interior 501 sf  
Exterior 79 sf  
Total 580 sf

**C9** 2 Bedroom  
2 Bathroom  
Interior 877 sf  
Exterior 66 sf  
Total 943 sf

**A6** Jr 1 Bedroom  
1 Bathroom  
Interior 465-480 sf  
Exterior 29-10 sf  
Total 494-490 sf

**C4** 2 Bedroom  
2 Bathroom  
Interior 805 sf  
Exterior 85-107 sf  
Total 890-912 sf



# Features

The feeling of eye-catching design and cozy dinners.  
The feeling of late-afternoon light streaming through the window.  
The feeling of a house becoming a home.

Home is a feeling. And it feels lovely.



A collection of 377 exceptionally designed studio, 1 and 2-bedroom residences paired with over 20,000 square feet of unrivaled amenities.

- Olo stands proudly at the highest point in Burquitlam, a 39-storey tower close to SFU with over 20,000 SF of unrivaled amenities
- Just an 8-minute walk to the Burquitlam SkyTrain station and up the street from the expanding Lougheed Mall
- A landmark community situated in Oakdale with a collection of studio, 1-bedroom and 2-bedroom residences. Distinctive architecture by GBL Architects Inc.
- A well-connected location surrounded by expansive city and mountain views, nestled against Burnaby Mountain
- Direct park access from an integrated courtyard
- Neighbourhood daycare facility at ground level

## Inviting Interiors

- Airy 9' ceilings in main living areas
- Air conditioning
- A choice of two contemporary colour palettes: Walnut and Oak
- Luxury vinyl plank flooring throughout the main living areas and bedrooms
- Roll-down shades for natural light control
- 24" front-loading stacked Samsung washer and dryer

## Refined Kitchens

- Custom Nordic-inspired cabinetry with under-cabinet LED lighting and soft-close hardware
- Solid quartz countertops
- Large-format, contemporary porcelain tile backsplash
- Convenient USB electrical outlets
- Under-mount single-bowl sink
- Pull-out recycling and waste bin organizers
- Blanco pull-out faucet in white or coal black
- Full suite of premium integrated appliances (24" in studios and 1-bedroom homes, 30" in 2-bedroom homes)
  - Fisher & Paykel Integrated fridge-freezer combination
  - Fisher & Paykel burner gas cooktop (four-burner in studio and 1-bedroom homes, five-burner in 2-bedroom homes)
  - Fisher & Paykel wall oven
  - Fisher & Paykel integrated dishwasher
  - Aura built-in hood fan
  - Panasonic built-in microwave with trim kit

## Luxurious Primary & Ensuite Bathrooms

- Solid quartz countertops
- Custom Nordic-inspired millwork vanity with special features:
  - Pull-out drawers for hair dryer and accessories
  - Soft-close hardware
- Framed mirror medicine cabinet with open shelving
- Large-format, contemporary porcelain tile flooring
- Ceramic wall tiles with tiled niche in most homes for bathing accessories
- Relaxing soaker tubs and tub/shower in all homes
- Walk-in showers in primary ensuite
- Full-height glass shower enclosures in all homes
- Chrome showerhead
- Kohler one-piece compact elongated toilet with skirted trapway, dual-flush

The developer reserves the right to make changes and modifications to the information contained herein without prior notice. This is not an offering for sale. Any such offering can only be made with the applicable Disclosure Statement and agreement of purchase and sale. E&O.E. Sales and marketing by Magnum Projects.

- Decorative mirror in the main bathroom
- Kohler undermount sink and faucet
- Hand towel hook and robe hook

## Outdoor Amenities

- Tower rooftop, featuring an outdoor kitchen with sinks and BBQs, open seating with firepits, and a large harvest dining table
- Outdoor children's play area
- Landscaped courtyard with park access

## Indoor Amenities

- Grand double height lobby with inviting seating lounge
- Children's playroom for growing families
- Fully equipped fitness centre and yoga/pilates studio to promote health and wellness
- Relaxing Nordic-inspired spa, featuring wellness-focused dry saunas with change rooms
- Cardio and core-focused fitness area with private training room
- Expansive rooftop amenities:
  - A spacious indoor private dining room and lounge for hosting social gatherings, featuring a kitchenette, 10-seat dining table, and soft seating lounge with fireplace
  - Games lounge with pool table, foosball table, games table, large screen TV's and lounge seating areas
  - Private karaoke and theatre room
- Thoughtfully designed facilities for pet owners, including a dog wash station
- Bike maintenance room
- Mail room with secure parcel locker storage

## Peace of Mind

- Secure keyless entry system for elevators and enterphone in the lobby
- Secure underground parking garage with EV-ready stalls
- Bike locker storage available
- Comprehensive 2-5-10 New Home Warranty by Travelers:
  - 2-year materials and labour warranty
  - 5-year building envelope warranty
  - 10-year structural warranty



# The Team

## Developer & Builder: Rize Alliance

Rize is a Vancouver-based full-service real estate development, construction management, and property management company. We have been developing mixed-use residential and commercial projects throughout Metro Vancouver since 1992.

Rize has over 2.5 million square feet in active or planned construction starts, resulting in 2,600 homes and 620,000 square feet of commercial space.

## Architecture: GBL Architects

GBL Architects Inc. is a cohesive and progressive Vancouver based firm of 70 architects, project managers and technicians providing a full range of architectural services to the private and public sector. The firm has built its reputation on high quality design, tight project management, technical proficiency, financial responsibility and keen administrative skills.

## Sales & Marketing: Magnum Projects

Since 1991, George Wong and the Magnum Projects team have established an impeccable track record. Across the Lower Mainland, Magnum Projects has consistently delivered impressive results for developers and purchasers. Magnum Projects is home to some of the most exceptional real estate professionals in the industry. From initial land acquisition and project development to after sales service, Magnum Projects has experienced industry specialists to help ensure the success of any project.

## Interior Design: Insight Design Group

Insight Design Group is an award-winning Vancouver-based interior design firm with a focus on residential, commercial, and hospitality projects. Since 1995, IDG has been involved with some of the most successful developments and projects throughout Vancouver and Canada.





A place  
to simply be.







Olo Homes  
by Rize

Sales Gallery:  
170 - 3355 North Road, Burnaby

Contact Us:  
[info@olohomes.ca](mailto:info@olohomes.ca)  
(604) 565 7299  
[olohomes.ca](http://olohomes.ca)

**Rize** M A G N U M

Developer reserves the right to modify or change plans, unit numbers, specifications, and/or features without notice. Floorplans, elevations, room sizes, decks, and square footage are approximate and may vary from the actual built home. Floorplans may be oriented differently than displayed. Refer to the Disclosure Statement for specific details. This is not an offering for sale. Any such offering can only be made with the applicable Disclosure Statement and agreement of purchase and sale. E&O.E. Sales and marketing by Magnum Projects.